



Publication date 1/6/2025

# CARBON REDUCTION PLAN

**Commitment to achieving Net Zero by 2045**

This Carbon Reduction Commitment and Plan is available on our website



**Eco Sourcing Hub**  
REDUCE COSTS, EMISSIONS & RISKS

# Baseline Emissions Footprint

Baseline emissions are a record of the greenhouse gases that have been produced in the past and were produced prior to the introduction of any strategies to reduce emissions. Baseline emissions serve as the reference point against which emissions reduction can be measured. However, since this is our first year of calculation, our baseline and current year emissions are identical.



Baseline Year: 2024

EMISSIONS	TOTAL (tCO <sub>2</sub> e)	
Scope 1	3	
Scope 2	Location Base: 4	Market Base: 4
Scope 3 (Included Sources)	44	
	Goods & Services	39
	Energy Supply	2
	Commuting	2
	Business Travel	0.01
	Transport Upstream	0,01
	Waste	1
	Transport Downstream	0,1
Total Emissions	51 Market Base 51 Location Base	

# Current Emissions Reporting

Current Year: 2024		
Baseline year emissions: 2024		
EMISSIONS	TOTAL (tCO <sub>2</sub> e)	
Scope 1	3	
Scope 2	Location Base: 4	Market Base: 4
Scope 3 (Included Sources)	44	
	Goods & Services	39
	Energy Supply	2
	Commuting	2
	Business Travel	0.01
	Transport Upstream	0,01
	Waste	1
	Transport Downstream	0,1
Total Emissions	51 Market Base 51 Location Base	

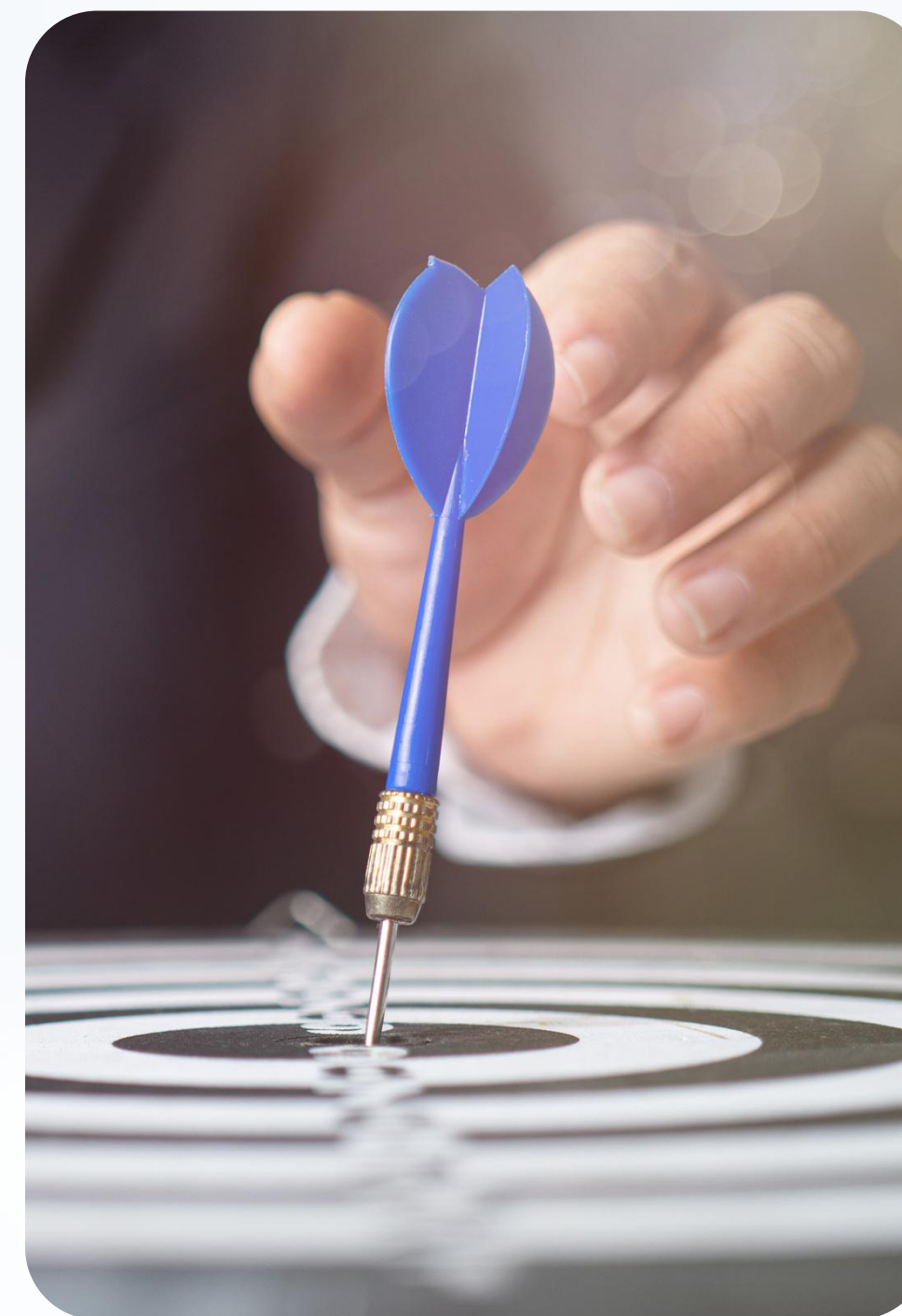
# Emissions Reduction Targets

To achieve Net Zero, and in line with the Science Based Targets initiative SBTi, we have adopted the following carbon reduction targets:



We are committing to reduce our Scope 1& 2 emissions by at least 45% by 2030 and 90% by 2040.

We are committing to reduce our Scope 3 emissions by at least 30% by 2030 and 90% by 2045.





# Carbon Reduction Projects

We are committed to monitoring our carbon emissions and conducting annual carbon footprint calculations covering all three scopes. This commitment will be effective throughout the duration of the contract.

3. Implement initiatives to encourage low-carbon commuting options for employees, such as incentives for public transportation, cycling, and carpooling.

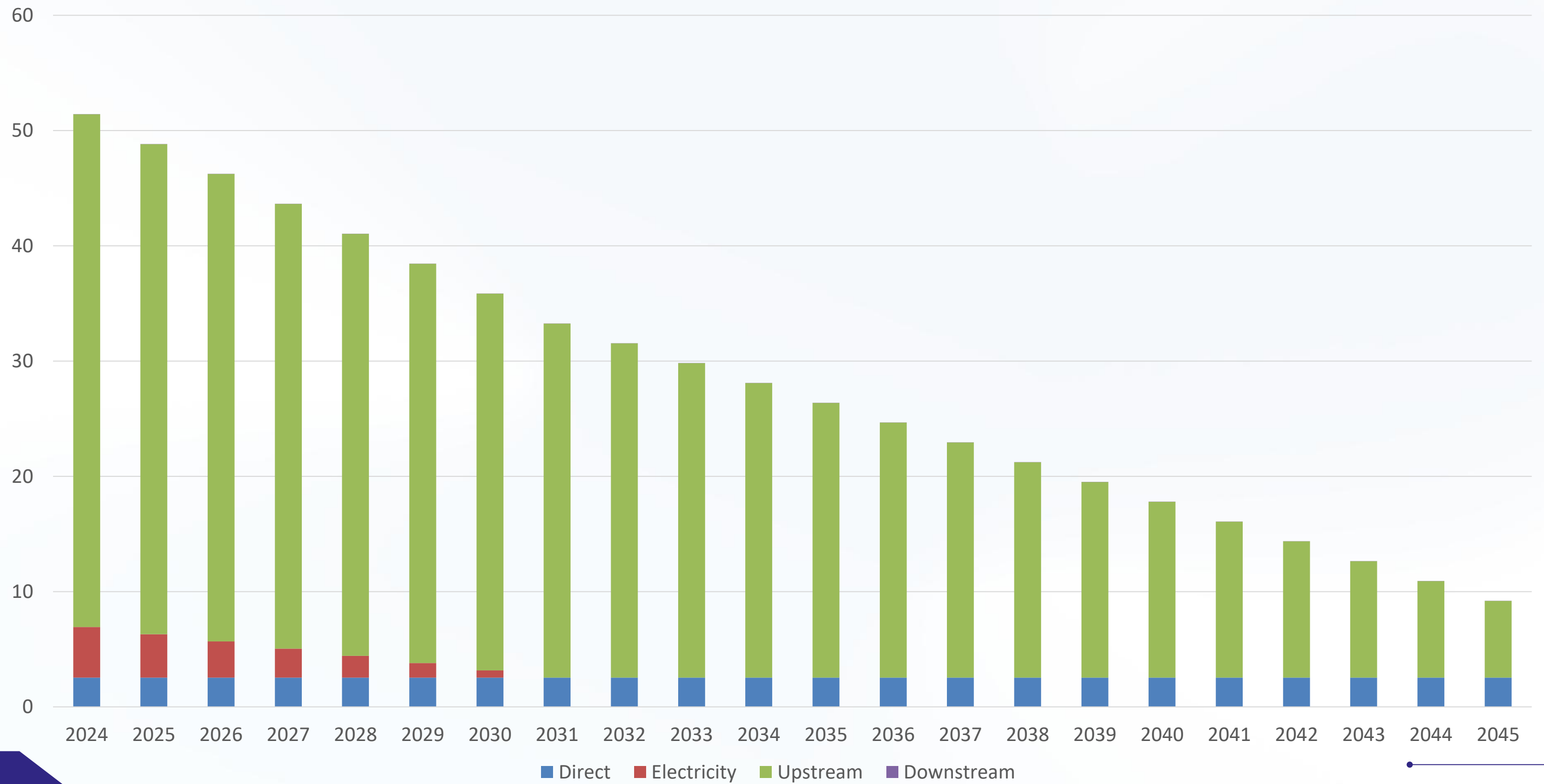
1. Transition to 100% renewable electricity by 2030.

2. Achieve a 90% reduction in emissions from purchased goods and services by 2045 by collaborating with suppliers to gather activity-based data, transitioning from spend-based analyses to actual CO2e reductions.

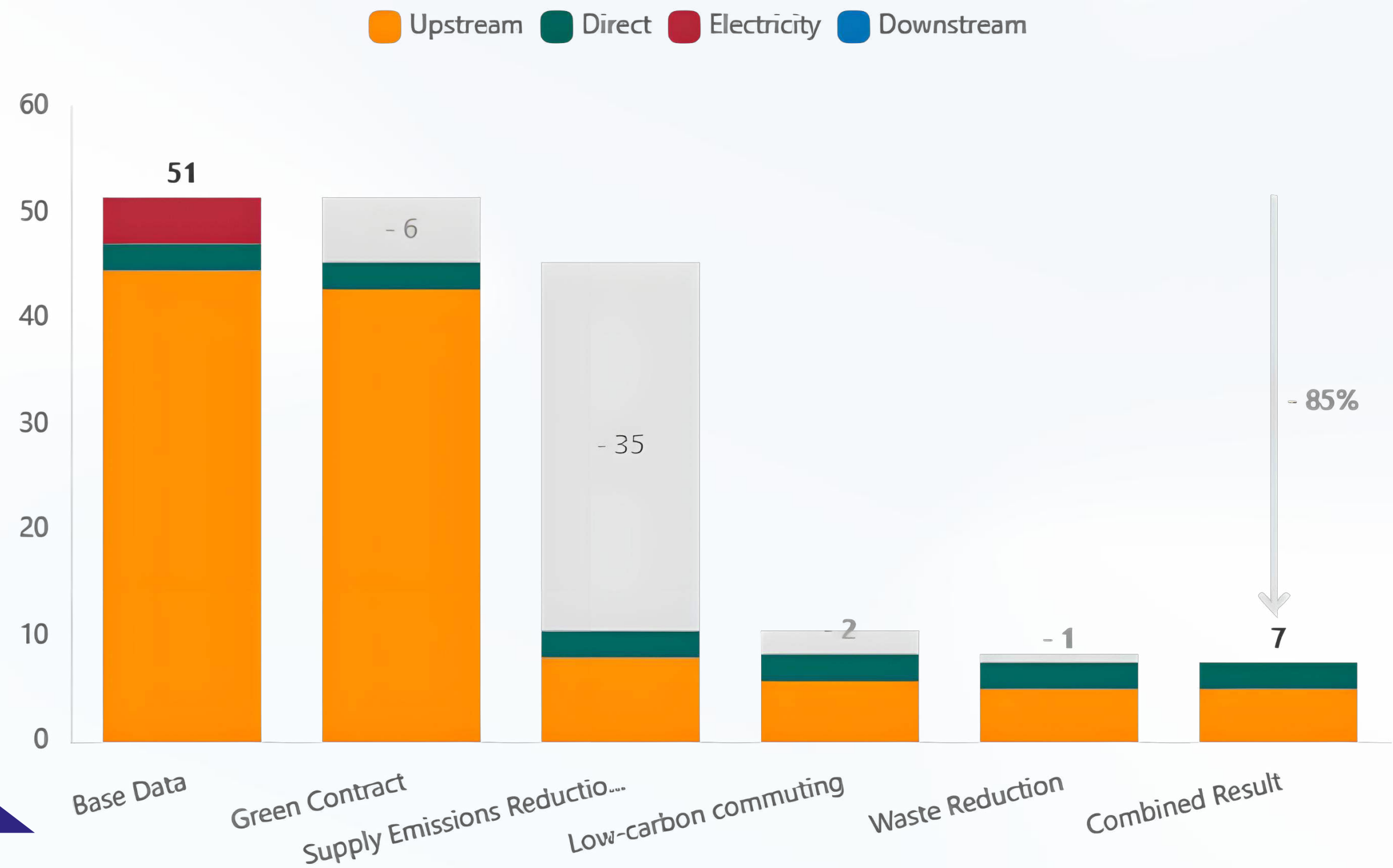
4. Reduce emissions from our waste by 90% by 2045.

These steps will collectively help us reduce our emissions by 85%.

# Alimentary Solutions



This is to show the impact each of the measures will have on our emissions:







# Declaration and Sign Off



This Carbon Reduction Plan has been completed in accordance with PPN 06/21 and associated guidance and reporting standard for Carbon Reduction Plans.

Emissions have been reported and recorded in accordance with the published reporting standard for Carbon Reduction Plans and the GHG Reporting Protocol corporate standard<sup>1</sup> and uses the appropriate [Government emission conversion factors for greenhouse gas company reporting](#)<sup>2</sup>.

Scope 1 and Scope 2 emissions have been reported in accordance with SECR requirements, and the required subset of Scope 3 emissions have been reported in accordance with the published reporting standard for Carbon Reduction Plans and the Corporate Value Chain (Scope 3) Standard<sup>3</sup>.

This Carbon Reduction Plan has been reviewed and signed off by the board of directors (or equivalent management body).



Signed on behalf of the Supplier:

Date: 1/6/2025

<sup>1</sup><https://ghgprotocol.org/corporate-standard>

<sup>2</sup><https://www.gov.uk/government/collections/government-conversion-factors-for-company-reporting>

<sup>3</sup><https://ghgprotocol.org/standards/scope-3-standard>

